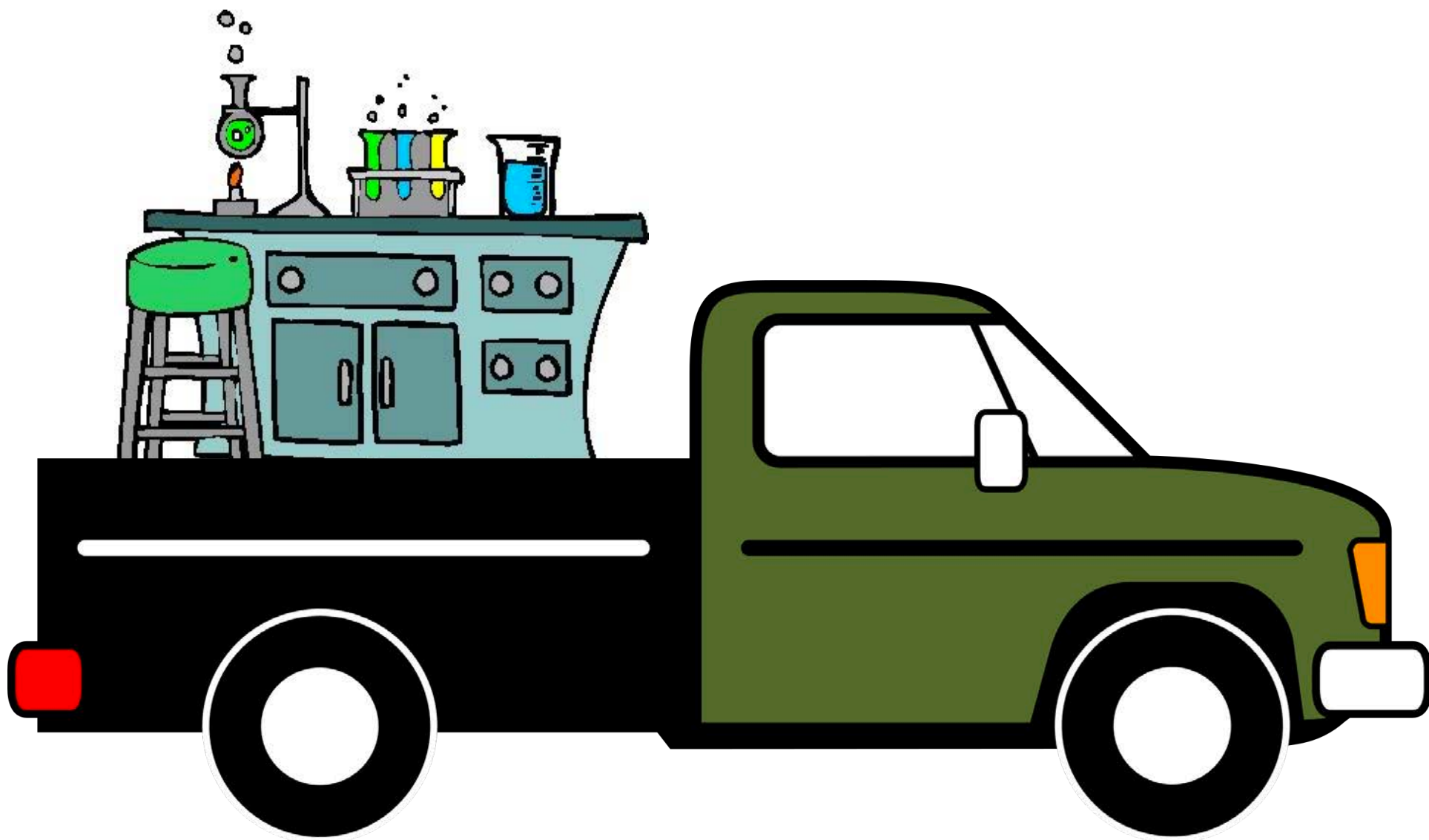


Space for the ChE Department



The ChE department will move to temporary lab space this summer and fall



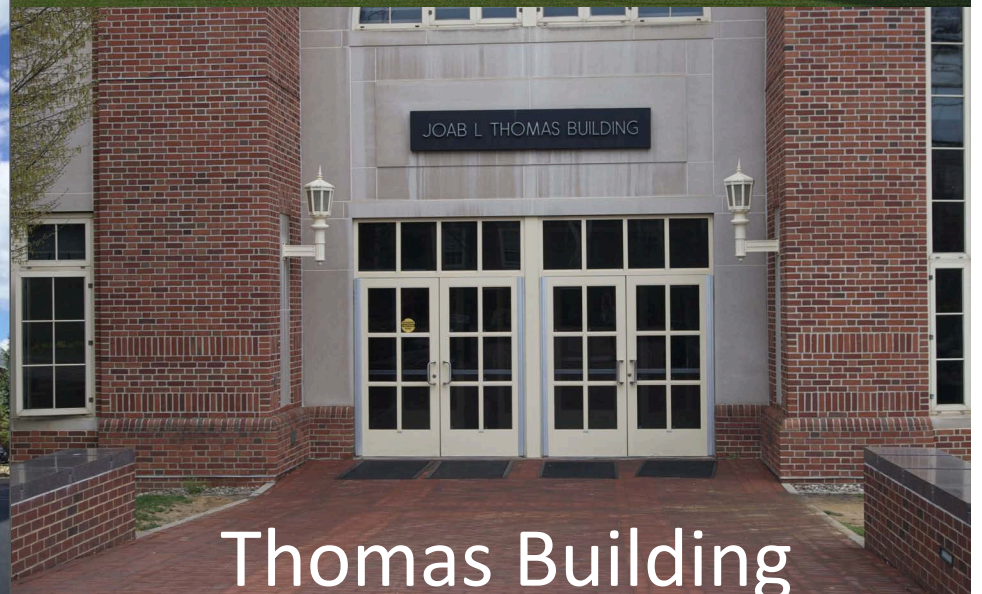
Fenske Lab will be demolished



The ChE department will move into a new building where Fenske now stands in 2019



The ChE department will move into temporary lab and office space in 2016



**Labs and Offices for: Zhang, Kumar, Esther Gomez, Zydney, Wood,
Curtis, J. Maranas, Danner, Fichthorn, Milner, C. Maranas, Janik**

Labs for: Matsoukas, Velegol

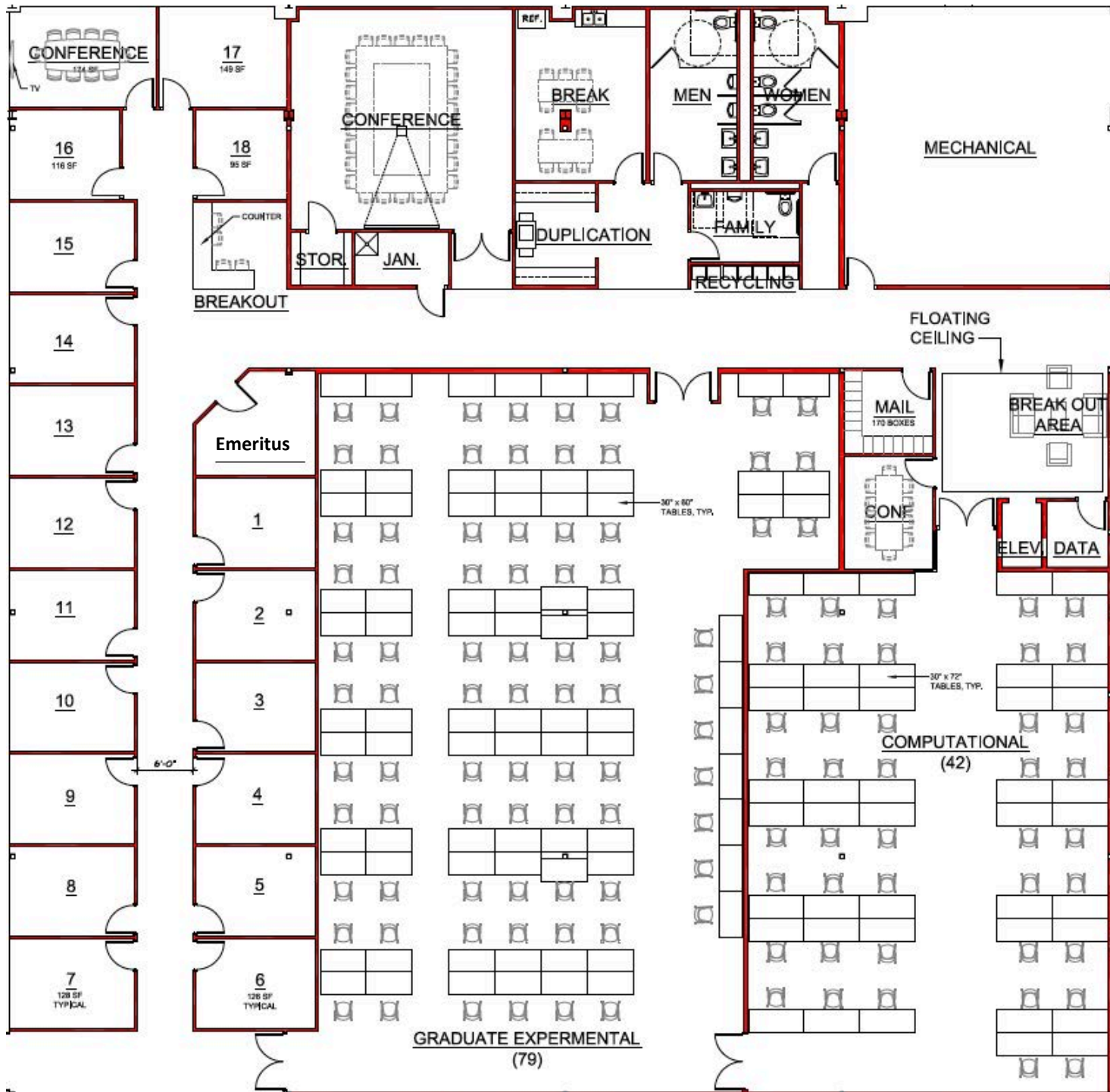
Grad Program Office

Department Office

**All staff except Jennie,
Rachel, & Blackie**

Greenberg Ice Pavilion

NITTANY
Building Specialties INC.





Research Space and Offices for: Borhan, Armaou

Offices for: Vrentas, McFadden, Hillsley, Velegol, Matsoukas

Undergrad Program Office

UG Computer Lab

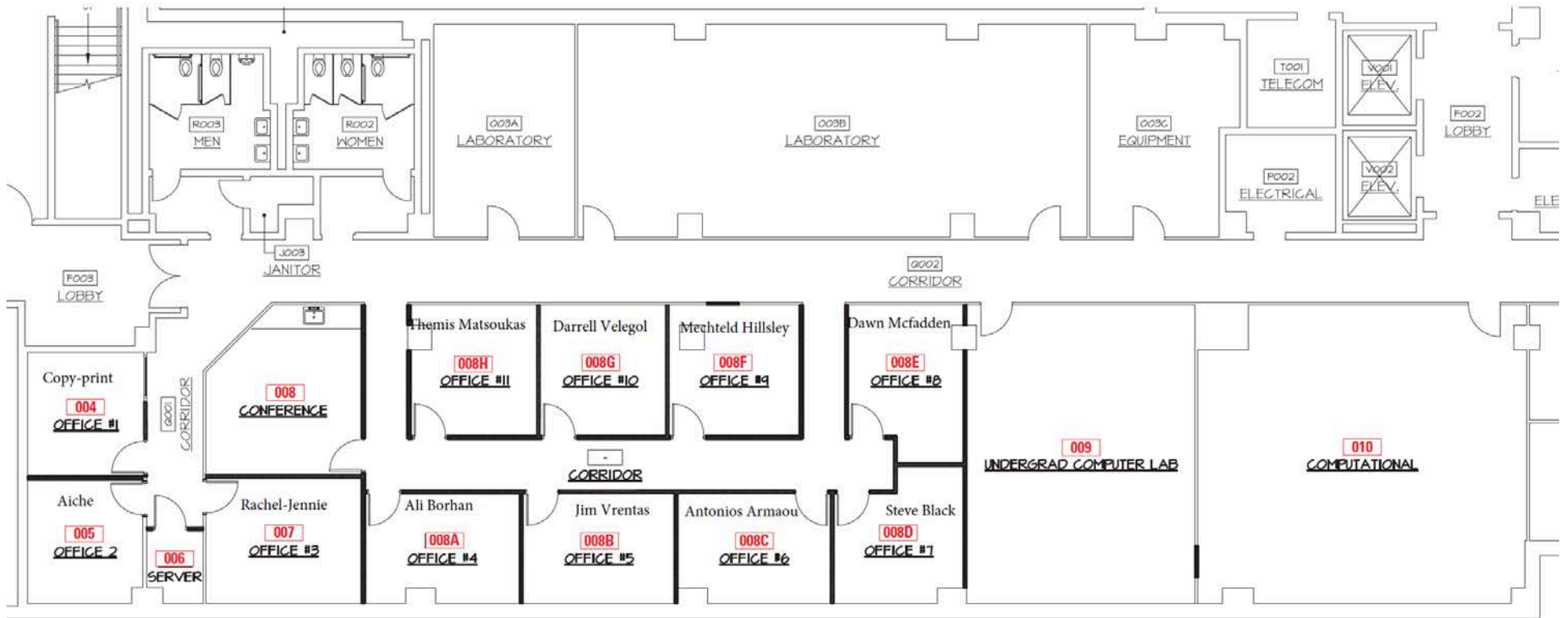
Senior Unit Ops Lab

AICHe/OXE office

Offices for: Jennie,
Rachel, & Blackie

Thomas Building

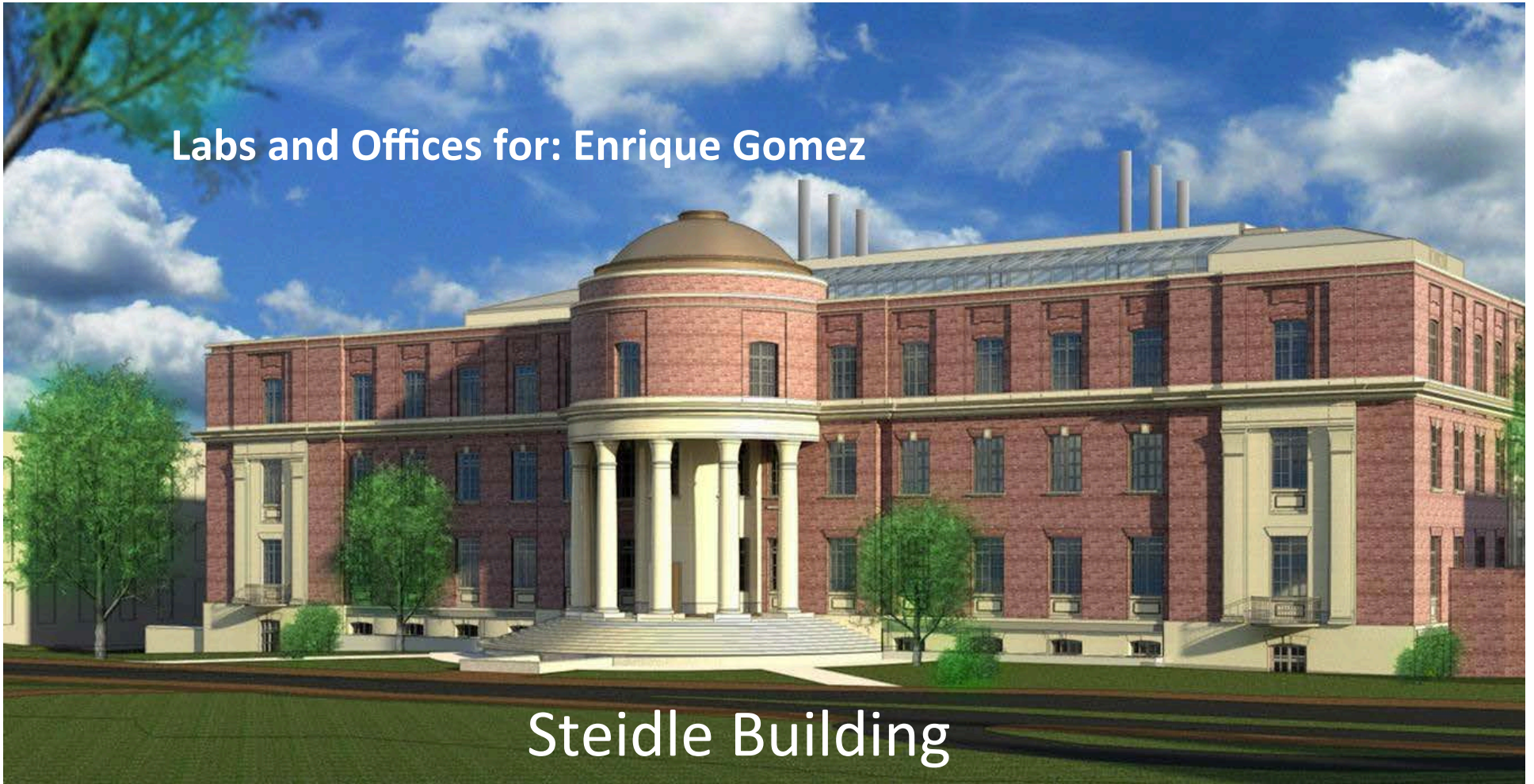
Thomas – Lower level floor plan



480 lab and additional UG computer labs not shown

Labs and Offices for: Enrique Gomez

Steidle Building



A photograph of a modern, multi-story office building with a distinctive facade of light-colored panels and dark brown accents. The building has several windows and a prominent entrance area. The sky is blue with scattered white clouds. A blue banner with white text is overlaid on the top part of the image.

MPI Building

Labs and Offices for: Rioux, Savage

PROPERTY OVERVIEW



New Building for ChE Dept.

- ChE/Biomedical Eng to be co-located
- Site of Fenske Lab
- 188,000 SF (gross), \$150 million
- Six story building
- Move to temporary space – late 2016
- Move to new building – early 2019

New Building for ChE Dept.

- student computer lab, unit ops lab
- distance learning classroom
- computer teaching lab
- knowledge commons
- auditorium classroom
- student organization office space
- open collaboration/lounge space on every floor

Greenway Engineering Building





















